

# Brevini Gearmotors





# Brevini: a history spanning 55 years

Brevini Power Transmission is among the world's top five manufacturers in the sector of mechanical transmissions and gear drives, thanks to growing market shares in industrial applications (steel industry, plastics production, materials handling) and in innovative systems such as wind turbines, waste recycling plants, and energy production. Brevini is a major player also in the mining sector and in marine technologies.

Established in 1960 by Renato, Luciano and Corrado Brevini, it was the first Italian company to produce planetary gearboxes. Many ingredients can change overtime to make a recipe more and more tasty, but some others need to stay. For Brevini, those are passion for products and people. The evolution of the core technologies and the related know-how spread around the world have had a key role in transforming in few decades an idea in a global multinational producing and selling more than 150.000 gearboxes per year.

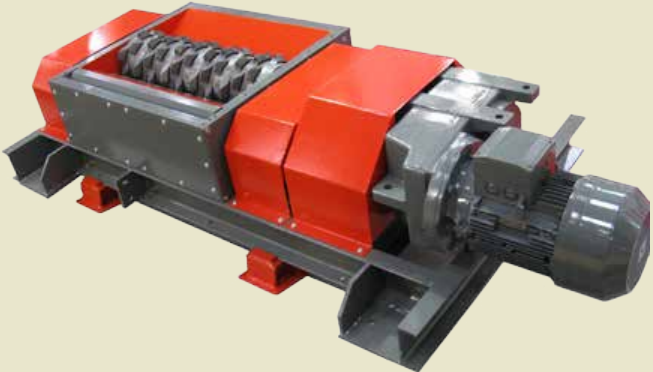


# Brevini in the gearmotors world

Brevini Power Transmission has renewed and strengthened its offer by introducing a new line of gear motors to meet the needs of the most demanding customers, hence expanding the quality offer “designed” by Brevini.

The range build-up is based upon 3 product typologies:

- Parallel axis with flange or pendular assembly and parallel axis for winches
- Coaxial axis with flange assembly or with pedestal
- Orthogonal axis



**Parallel Shaft Helical Gearboxes  
D - Series**



**Helical inline Gearboxes  
M&N - Series**



**Bevel Helical Gearboxes  
K - Series**



**Parallel Shaft Helical Gearboxes  
for Hoisting  
V - Series**



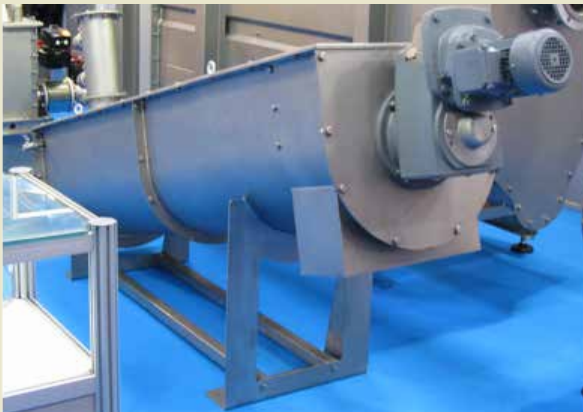


# Parallel Shaft Helical Gearboxes D - Series



D17	200Nm
D27	450Nm
D28	600Nm
D37	820Nm
D47	1.550Nm
D57	3.000Nm
D67	4.300Nm
D77	8.000Nm
D87	13.000Nm
D97	18.000Nm

The special feature is the parallel shaft, which provides mounting support and makes it easier to use. These types are manufactured as flange mounted, foot mounted, parallel shaft mounted or combination of these mounting possibilities. The parallel shaft gearboxes are manufactured in a modular system. The output shaft and flange can be added to the standard parallel shaft gearbox without any change on the gearbox. The housing has mounting points on both sides, which allows mounting from both sides. The input side of parallel shaft gearboxes is flexible. IEC B5 or B14, standard coupled or with solid input shaft gearboxes are available. The combination with other types of gearboxes can be made with a minimum change. In applications where efficiency and strength is very important, parallel shaft gearboxes are preferred to worm gearboxes. Parallel shaft gearboxes have also advantages in radial loads.



- Screw conveyors
- Bucket elevators

Particularly indicated for applications such as:

- **Shredder**
- **Screw presses**



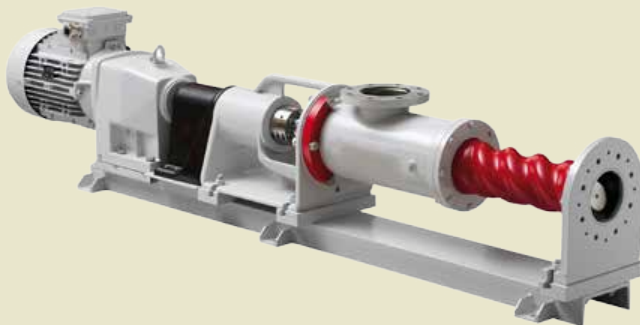
# Helical inline Gearboxes

## M&N - Series



M00	82Nm
M10	140Nm
M17	200Nm
M20	280Nm
M27	450Nm
M28	600Nm
M37	820Nm
M47	1.550Nm
M57	3.000Nm
M67	4.300Nm
M77	8.000Nm
M87	13.000Nm
M97	18.000Nm

M&N Series gearboxes have been developed according to the single piece housing principle (monoblock) which has advantages in rigidity, oil leakage, noise level and gear strength. All bearings are supported by the single piece housing itself and not by cover plates or other components which connect other parts. Machining axes with single operation cycle provide high precision and very tight axis tolerance. The housing made of GG20-22 material provides high gear quality together with the high manufacturing technologies achieved. This design ensures both high bearing and gear lifetime; high radial loads are supported. The bearings, gears and shafts used in the gearbox have been calculated using professional software, and they are implemented according to up-to-date standards. The middle bearing support plate is the best support for bearings used in three stage gearboxes. So wear and deformation caused by working with load are minimized achieving low noise gearbox operation. M series gearboxes are featured by easy installation and flexible use.



Particularly indicated for applications such as:

- **Progressive cavity pumps**
- **High volume axial fans**

The gearboxes motor connection can be provided according to customers request, suitable to direct, IEC B5 or B14 connection. All models can be delivered foot or flange mounted with two or three stages in a single housing. These gearboxes have lower axis height than the previous models and are compact for the same power and speed. All gearboxes has been designed modular therefore it is possible to couple two gearboxes with minimum change. Every tolerance on all the parts used in the gearbox is actively controlled by our quality assurance system.

# Bevel Helical Gearboxes K - Series



K00	80Nm
K10	140Nm
K20	280Nm
K27	450Nm
K37	820Nm
K47	1.550Nm
K57	2.700Nm
K67	4.300Nm
K77	8.000Nm
K87	15.000Nm

K Series gearboxes are helical-bevel geared monoblock housing gearboxes. K Series are designed for higher efficiency and higher strength required operations. Input and output shafts are perpendicular to each other.

K Series have flexible connection possibilities which consists of IEC B5 or B14 connection, directly mounted or solid with the input shaft options. Small sizes of K series gearboxes can be 2 and 3 stages. For bigger sizes only 3-stage types in monoblock housing are manufactured. K series supplied for high reduction operations up to 6 stages by using double housings.



Particularly indicated for applications such as:

- **Conveyors**
- **Small winches**
- **Mixers**
- **Separation technology for food industry**



# Parallel Shaft Helical Gearboxes for Hoisting D - Series



VR373.1K	3,2ton
VR473.1K	6,3ton
VR573.1K	12,5ton
VR673.1K	25ton
VR773.1K	40ton

V series gear units are three stage, helical geared hoist drum drive units produced according to the monoblock principle. With the support of monoblock housings all axes work with single operation to achieve high production precision. V series bolt connections are made directly on the housing with easy connection holes which do not require long bolts. This ensures rigid mounting. Input and output center distance is extended as much as possible for using larger drums to achieve longer rope service life. The V series gear unit output shaft bearing distance is long and the housing width is extended. Longer bearing distance and taper rolling bearings make them capable of withstanding high radial loads. V series are designed for higher ISO / FEM classes with greater gear face widths compared to products of similar size. The housing material is GG20 - GG22 cast iron and the gears are made of high quality case carburized steel. The material properties as well as the manufacturing processes are constantly checked. The output shafts are solid output shafts with spline according to DIN5480 and are produced with different dimensions.



Particularly indicated for applications such as:

- **Overhead Cranes**
- **Tower Cranes**

V series gear units are designed for double and single speed brake motors. They are available in five different sizes in the 0.5 - 50 tons load range.







# Brevini worldwide